

Combining Yin and Yang generates energy

The choice of plants depends on the taste of the customer and the site conditions. The deliberate combination of Yin and Yang (here grasses equal Yang and stones equal Yin) additionally generate energy

Visual silence

is created by repetitive materials, colors and plants. The fences were adapted to the facade and the selected house tree after the color of the front door.

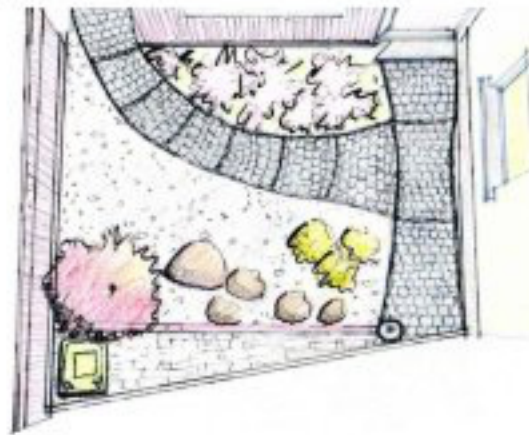
Designing high and low level areas

The position of the maple was calculated, the unfavorable area next is designed very simply with gravel

Compensation of missing areas - optimizing the plot shape

The extension of the house has created a missing area which is a little offset by the fence. Simultaneously the plot shape is straightened by the separation of the corner. Using the area as a parking space (as shown on the plan of the architect) would increase the weakening by the missing area further.

Landscaping on the basis of Imperial Feng Shui calculations and other energetic aspects



Determine the entry of energy on the land

A higher fence directs the entry of the energy from the property boundary to the range of the entrance, because here is analyzed for the best energy (Dai Wong). A light at the gate produces attention thereby drawing even more energy to the estate.

Garbage has bad chi

The garbage can was deliberately placed outside the front garden.

The energy is directed, dynamized and stored

The shape of the paths and the choice of pattern invigorate Chi. Natural stones store the energy.